

ASIA'S MOST ICONIC AND ADVANCED MICE DESTINATION




GALAXY™
INTERNATIONAL
CONVENTION CENTER
銀河國際會議中心

銀河綜合度假城成員 A MEMBER OF GALAXY INTEGRATED RESORTS

GALAXY INTERNATIONAL CONVENTION CENTER



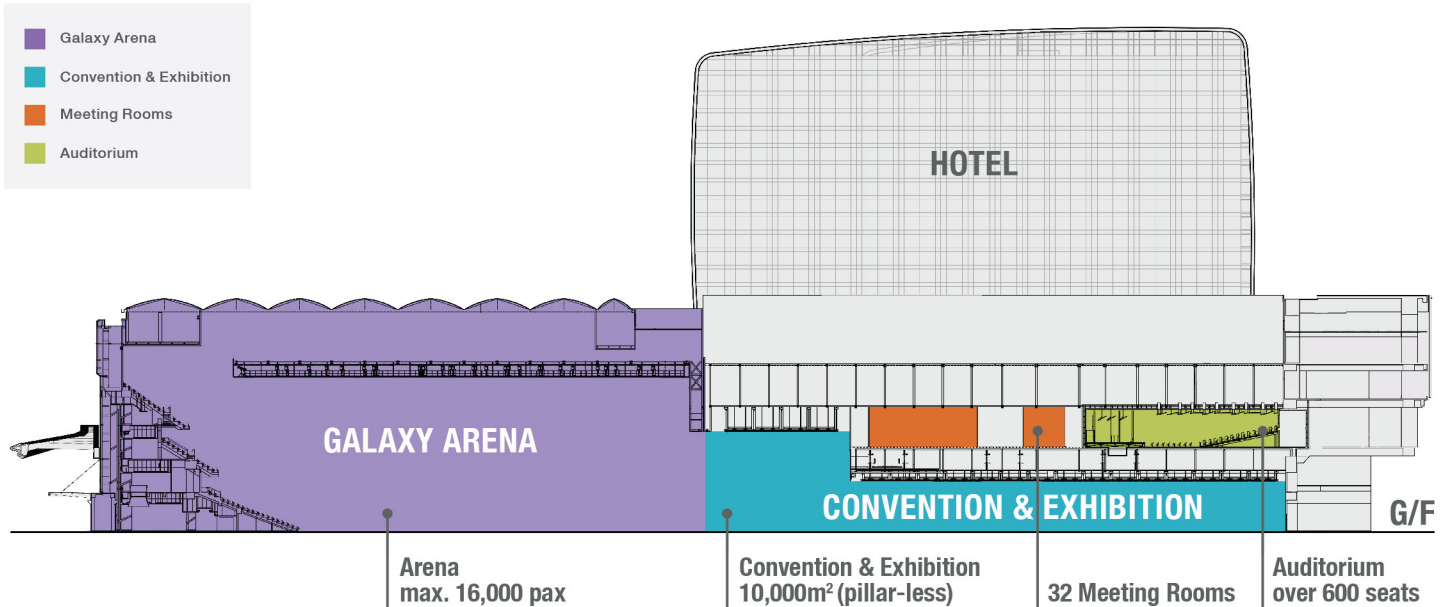
A NEW CHAPTER IN INTEGRATED RESORT DEVELOPMENT

Opening in the first half of 2021, Galaxy International Convention Center is the new event facility developed by Galaxy Entertainment Group and the latest addition to the group's ever-expanding integrated resort precinct in Macau.

It will not only increase the number of luxurious hospitality, entertainment and business occasions, but also promise the finest culinary experiences, luxury hospitality, MICE facilities and entertainment expertly delivered by a dedicated team.

With a breathtaking design, advanced technology, flexible event space catering to multiple configurations and set-ups, the stunning Galaxy International Convention Center will redefine meetings, conferences, banqueting, live entertainment and sporting events in Asia.

Galaxy International Convention Center will be Macau's premier MICE destination and one of the world's most inspiring event venues to bring guests together for fun, knowledge, creativity and community.



01 CONFERENCE

TRANSPORT YOUR GUESTS TO WHOLE NEW WORLDS

The ground level space offers nearly 4,000m² in conference mode with 9m ceiling height. It consists of 3 partitionable spaces which can be separated into 3 convention spaces. Each area is fitted with built-in infrastructure for audio-visual timeline.

The space is also equipped with the most advanced programmable LED ceiling which offers different ambience for any genre of events.



02 EXHIBITION

FULLY FLEXIBLE FOR EVENTS OF ANY SCALE

There is 10,000m² of pillar-less space to accommodate up to 7,000 delegates and Galaxy International Convention Center is the perfect venue for a wide range of exhibitions. The space can be divided into multiple separate halls with highly soundproof partitions for smaller scale events. Set-up and logistics are also made simple and efficient with direct vehicle access for loading and unloading, easy access rigging grids, complete utility services (water, power and communications) via floor trenches and full catering support for each hall.



03 BANQUET

THE FINEST CULINARY AND SERVICE STANDARDS

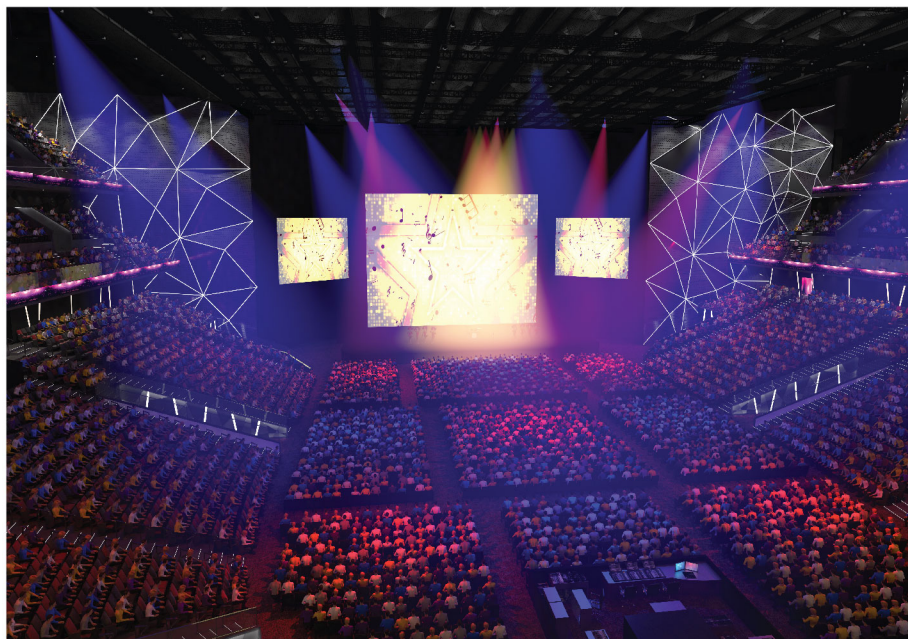
From exclusive corporate dinners to gala banquets for up to 2,400 guests, everyone will be assured of the very best in service and culinary craftsmanship. Galaxy International Convention Center offers a diverse range of cuisines by world recognized chefs for both large banquets and smaller events. Guests will be in awe of the immersive high-definition digital screens that can transport them to any time or place for that very unique occasion.



04 GALAXY ARENA

THE PREMIER SPACE FOR WORLD-CLASS EVENTS

One of Asia's largest venues with a 16,000-seat capacity, Galaxy Arena is where spectacular events come to life, whether it is the most elaborate world tour concert or dramatic fight night. Center-stage, end-stage or boxing ring set-ups, the endlessly customizable space offers the greatest flexibility for your event. With unobstructed views and high-definition broadcasting enabled by advanced technical infrastructure, every guest will enjoy amazing 360° sound and vision. There are also 11 concession stands offering unique refreshments; Hospitality Suites for special guests to relax and network in the utmost of luxury.



05 BALLROOM AND MEETING ROOMS

PERFECT SPACES FOR ANY OCCASION

In addition to its large function venues, Galaxy International Convention Center has flexible combinations and generous networking spaces for hosting the world's most discerning corporate clients and conference delegates. The luxurious grand ballroom catering to over 1,000 guests is perfect for any special occasion. All meeting rooms have built-in state-of-the-art audio-visual technology, data channels and broadcast communications, providing everything you and your distinguished guests may require.

06 AUDITORIUM

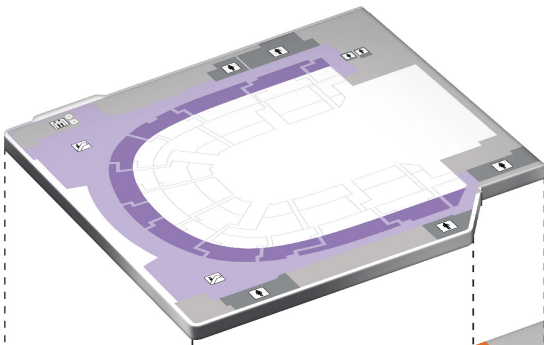
A VERSATILE AND INTIMATE VENUE

Built to world-class standard, this 650-seat auditorium is equipped with state-of-the-art audio-visual, sound and lighting systems and presentation system. Logistically, it has a fully motorized rigging system, easy access to service elevators and a fixed stage with floor loading of 5kN/m², designed to the world's highest performance standards. An excellent choice for keynote sessions, opening ceremonies, cultural and musical performances, and new product launches of the region.



FLOOR PLANS

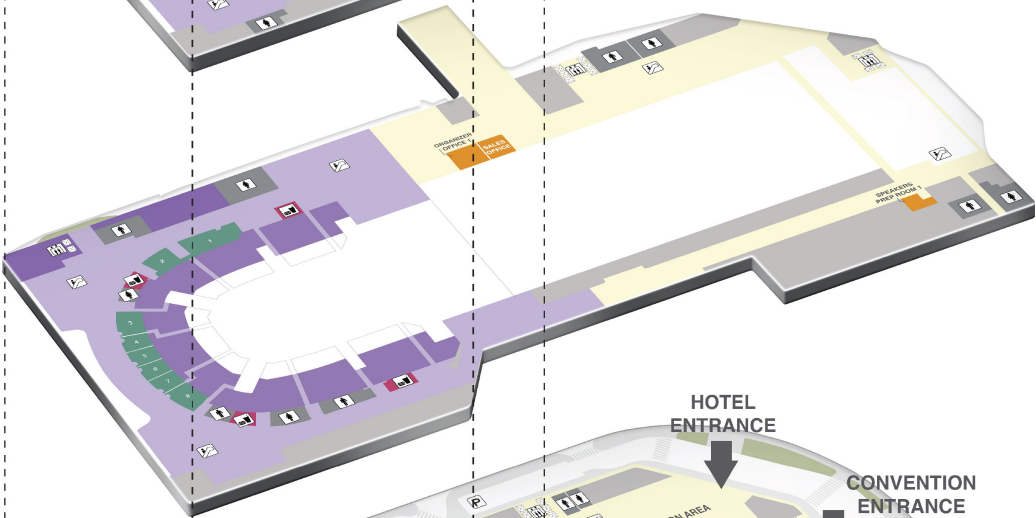
THIRD FLOOR



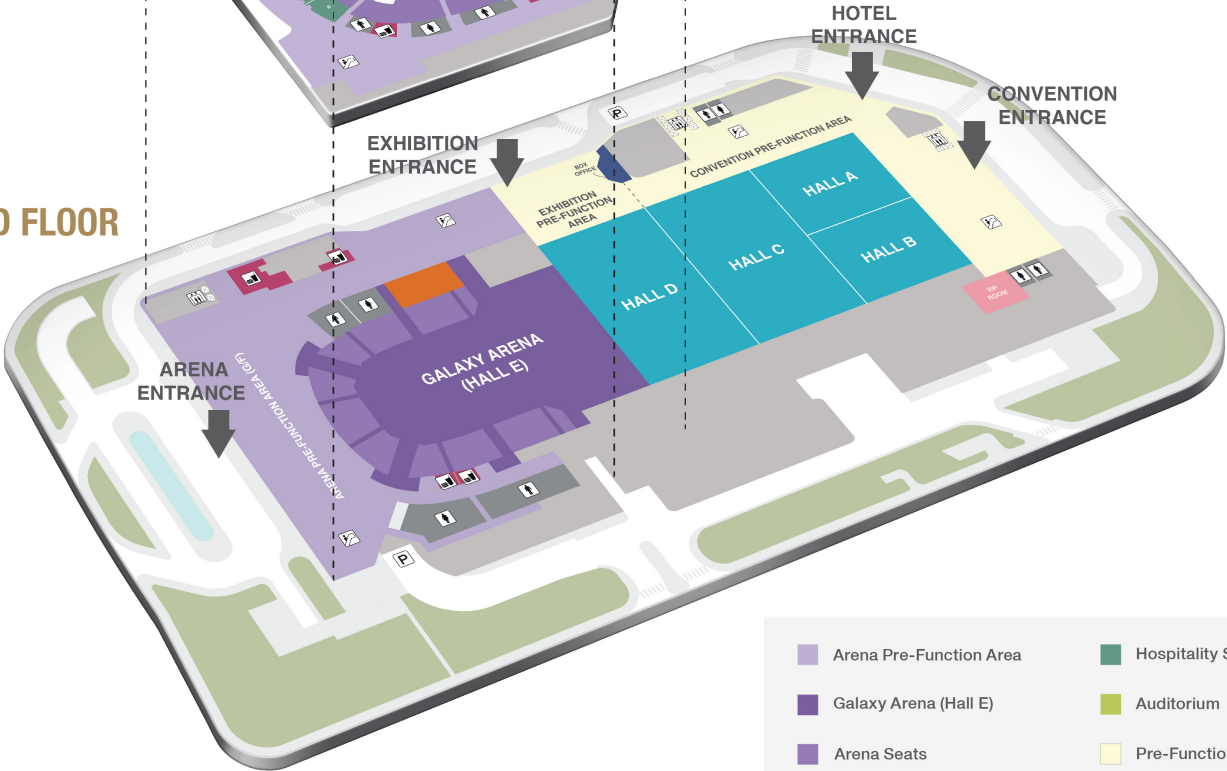
SECOND FLOOR



FIRST FLOOR

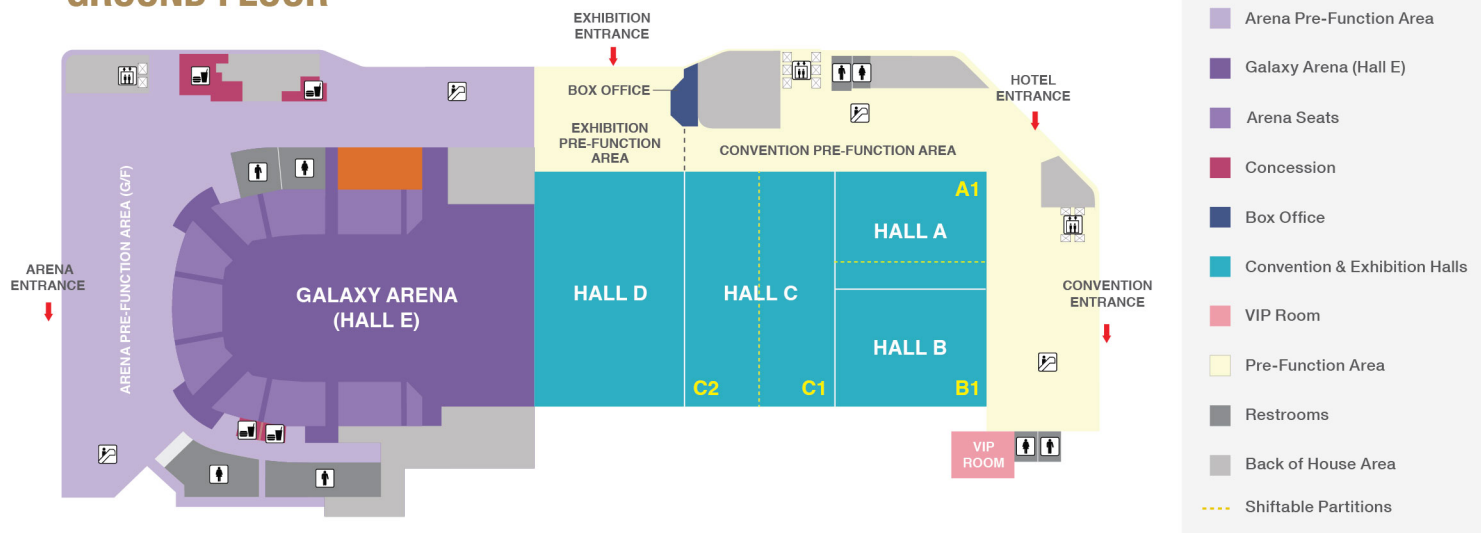


GROUND FLOOR



| | |
|-------------------------------|--------------------|
| Arena Pre-Function Area | Hospitality Suite |
| Galaxy Arena (Hall E) | Auditorium |
| Arena Seats | Pre-Function Area |
| Convention & Exhibition Halls | Concession |
| VIP Room | Restrooms |
| Meeting Rooms | Back of House Area |
| Box Office | |

GROUND FLOOR



FULL EXHIBITION AREA

Approximately **10,000m²** of pillar-less exhibition area, suitable for hosting large-scale international exhibitions. Flexible layout to suit different exhibition themes and **535 exhibition booths** (3m x 3m).



EXTENDED ARENA + 1 HALL

The space can be split into **2 zones**:
An extended arena (in boxing mode when extended into exhibition hall);
a large convention / exhibition / banquet area
Extended arena: **16,000 pax**



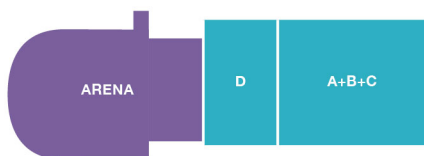
ARENA + 1 HALL

The space can be split into **2 zones**:
An arena; a large convention / exhibition / banquet area
Arena: **12,000 pax**



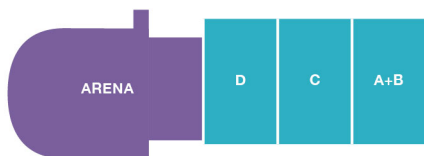
ARENA + 2 HALLS

The space can be split into **3 zones**:
An arena; 2 exhibition halls
Activities can be held in all 3 zones simultaneously



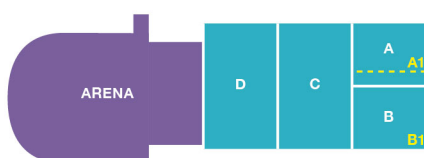
ARENA + 2 HALLS

The space can be split into **3 zones**:
An arena; a large banquet area (with **200 tables**); an exhibition hall
Activities can be held in all 3 zones simultaneously



ARENA + 3 HALLS

The space can be split into **4 zones**:
An arena and 3 separate halls; hosting a performance, convention, exhibition and banquet concurrently.



ARENA + 4 HALLS

The space can be split into **5 zones**:
An arena and 4 separate halls; hosting a performance, convention, exhibition, banquet, and meeting all at the same time.

SECOND FLOOR



32 MEETING ROOMS

32 meeting rooms of different sizes (catering over 1,000 guests), perfect for breakout

AUDITORIUM

Area: 1,097m²
Capacity: over 600 seats (theater set-up)

KEY FEATURES



PARKING

- Dedicated parking space for designated guests
- Additional 1,080 spaces available directly across the resorts



TRUCK ACCESS

- 2 direct access points to Hall and Arena floor area with 10 loading docks at basement



ELEVATORS

- 12 passenger elevators
- 4 freight elevators with 4,500kg capacity
- 1 car elevator with 7,200kg capacity
- 3 service elevators with 2,000kg capacity
- 13 escalators



CLEARANCES

- Halls A, B & C: 9m to the bottom of truss;
- Hall D: 26m to bottom of truss;
- Hall E: 28m to bottom of truss;
- Meeting room: 4-6m to ceiling



FOOD & BEVERAGE SERVICES

- 11 concession stands in Arena
- 1 production kitchen + 2 satellite kitchens
- Mobile kiosks
- 2 restaurants



PRE-FUNCTION

- More than 6,000m² of pre-function space



ELECTRICAL

- Supply Voltage at 230V (Single-phase) / 400V (Three-phase); 50Hz
- Arena**
- Total 1800 Amp @ 400V power available at floor level for production
 - Total 400 Amp @ 400V power available at grid level for rigging and production lights

Convention & Exhibition

- Total 1600 Amp @ 400V power available at floor level for production



TELECOMMUNICATIONS

- Full high speed Wi-Fi coverage



AUDIO-VISUAL

- Comprehensive A/V production support



BUSINESS SERVICES

- Providing on-site full-service: fax, copying, express mail, packaging, printing, etc



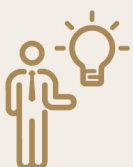
CUSTOMER SERVICES

- ATM
- Concierge, restaurant information and reservations



DIGITAL DISPLAY

- Digital display and wayfinders across the property



REALIZE YOUR UNIQUE VISION WITH EVENT STUDIO

We believe in the power of co-creation. EVENT STUDIO is a highly creative and innovative team of event professionals. With EVENT STUDIO, you can be assured of bespoke, cutting-edge and flawlessly executed events that will offer memorable experiences for your discerning guests. In addition, you will also have the assistance of our Events Planning Team who will work closely with you from day one to ensure that your event is well-planned and perfectly executed.

SEATING CAPACITY

| Floor | Room | Area (m ²) | Theater† | Classroom† | Cocktail# | Banquet# | U-shape | Boardroom | Hollow Space | Exhibition (3x3)m ² |
|--------------|----------------------------------|------------------------|----------|------------|-----------|----------|---------|-----------|--------------|--------------------------------|
| Ground Floor | Hall A | 723 | 636 | 412 | 687 | 504 | - | - | - | 43 |
| | Hall A1 | 545 | 480 | 311 | 518 | 384 | - | - | - | 33 |
| | Hall B | 725 | 638 | 413 | 689 | 504 | - | - | - | 44 |
| | Hall B1 | 903 | 795 | 515 | 858 | 624 | - | - | - | 54 |
| | Hall C | 1,930 | 1,698 | 1,100 | 1,834 | 1,344 | - | - | - | 116 |
| | Hall D | 1,600 | 1,408 | 912 | 1,520 | 1,116 | - | - | - | 96 |
| | Hall E | 3,250 | 2,860 | 1,853 | 3,088 | 2,268 | - | - | - | 195 |
| | A+B | 1,448 | 1,274 | 825 | 1,376 | 1,008 | - | - | - | 87 |
| | A+B+C | 3,713 | 3,572 | 2,100 | 3,527 | 2,592 | - | - | - | 223 |
| | A+B+C+D | 5,638 | 4,961 | 3,214 | 5,356 | 3,936 | - | - | - | 338 |
| | A+B+C+D+E | 8,888 | 7,821 | 5,066 | 8,444 | 6,216 | - | - | - | 533 |
| | A+B+C1 | 2,597 | 2,285 | 1,480 | 2,467 | 1,812 | - | - | - | 156 |
| | C2+D | 2,740 | 2,411 | 1,562 | 2,603 | 1,920 | - | - | - | 164 |
| | VIP Room | 65 | - | - | - | - | 20 | - | - | - |
| | Speaker Preparation Room 1 (1/F) | 38 | - | - | - | - | - | - | - | - |
| | Organizer Office 1 (1/F) | 57 | - | - | - | - | - | - | - | - |

| | | | | | | | | | | | | | | | | | | |
|--------------|----------------------------|-------|-----|-------|-----|-----|-----|-------|-----|-------|-----|-----|-----|-----|-----|-----|-----|---|
| Second Floor | Meeting Room 1 | 121 | | 112 | | 72 | | 115 | | 72 | | 24 | | 48 | | 36 | | - |
| | Meeting Room 2 | 107 | 200 | 106 | 176 | 67 | 114 | 102 | 190 | 72 | 132 | 21 | 40 | 43 | 80 | 32 | 60 | - |
| | Meeting Room 3 | 97 | | 92 | | 60 | | 92 | | 60 | | 19 | | 39 | | 29 | | - |
| | Meeting Room 4 | 104 | 221 | 104 | 194 | 64 | 126 | 99 | 210 | 72 | 144 | 21 | 44 | 42 | 88 | 31 | 66 | - |
| | Meeting Room 5 | 115 | | 96 | | 67 | | 109 | | 72 | | 23 | | 46 | | 35 | | - |
| | Meeting Room 6 | 66 | 137 | 67 | 121 | 38 | 78 | 63 | 130 | 36 | 84 | 13 | 27 | 26 | 55 | 20 | 41 | - |
| | Meeting Room 7 | 75 | | 67 | | 44 | | 71 | | 48 | | 15 | | 30 | | 23 | | - |
| | Meeting Room 8 | 93 | 194 | 96 | 171 | 63 | 111 | 88 | 184 | 72 | 144 | 19 | 39 | 37 | 78 | 28 | 58 | - |
| | Meeting Room 9 | 97 | | 96 | | 63 | | 92 | | 72 | | 19 | | 39 | | 29 | | - |
| | Meeting Room 10 | 67 | 136 | 73 | 120 | 52 | 78 | 64 | 129 | 48 | 96 | 13 | 27 | 27 | 54 | 20 | 41 | - |
| | Meeting Room 11 | 67 | | 73 | | 52 | | 64 | | 48 | | 13 | | 27 | | 20 | | - |
| | Meeting Room 12 | 42 | 84 | 40 | 74 | 27 | 48 | 40 | 80 | 24 | 48 | 8 | 17 | 17 | 34 | 13 | 25 | - |
| | Meeting Room 13 | 42 | | 40 | | 27 | | 40 | | 24 | | 8 | | 17 | | 13 | | - |
| | Meeting Room 14 | 42 | 84 | 40 | 74 | 27 | 48 | 40 | 80 | 24 | 48 | 8 | 17 | 17 | 34 | 13 | 25 | - |
| | Meeting Room 15 | 42 | | 40 | | 27 | | 40 | | 24 | | 8 | | 17 | | 13 | | - |
| | Meeting Room 16 | 275 | 548 | 298 | 482 | 180 | 312 | 261 | 521 | 168 | 384 | 55 | 110 | 110 | 219 | 83 | 164 | - |
| | Meeting Room 17 | 275 | | 300 | | 180 | | 261 | | 168 | | 55 | | 110 | | 83 | | - |
| | 16+17 with corridor | 751 | | 661 | | 428 | | 713 | | 540 | | 150 | | 300 | | 225 | | - |
| | Meeting Room 18 | 236 | 525 | 244 | 462 | 140 | 299 | 224 | 499 | 168 | 324 | 47 | 105 | 94 | 210 | 71 | 158 | - |
| | Meeting Room 19 | 236 | | 242 | | 140 | | 224 | | 168 | | 47 | | 94 | | 71 | | - |
| | 18+19 with corridor | 646 | | 568 | | 368 | | 614 | | 468 | | 129 | | 258 | | 194 | | - |
| | 16+17+18+19 with corridor | 1,397 | | 1,229 | | 796 | | 1,327 | | 1,008 | | 279 | | 559 | | 419 | | - |
| | Meeting Room 20 | 63 | | 68 | | 32 | | 60 | | 48 | | 13 | | 25 | | 19 | | - |
| | Meeting Room 21 | 69 | 138 | 76 | 121 | 36 | 79 | 66 | 131 | 48 | 96 | 14 | 28 | 28 | 55 | 21 | 41 | - |
| | Meeting Room 22 | 68 | | 76 | | 36 | | 65 | | 48 | | 14 | | 27 | | 20 | | - |
| | Meeting Room 23 | 106 | | 114 | | 69 | | 101 | | 72 | | 21 | | 42 | | 32 | | - |
| | Meeting Room 24 | 113 | 214 | 124 | 188 | 69 | 122 | 107 | 203 | 72 | 144 | 23 | 43 | 45 | 86 | 34 | 64 | - |
| | Meeting Room 25 | 113 | | 124 | | 69 | | 107 | | 72 | | 23 | | 45 | | 34 | | - |
| | Meeting Room 26 | 109 | | 124 | | 69 | | 104 | | 72 | | 22 | | 44 | | 33 | | - |
| | Meeting Room 27 | 102 | | 112 | | 80 | | 97 | | 72 | | 20 | | 41 | | 31 | | - |
| | Meeting Room 28 | 68 | | 60 | | 40 | | 65 | | 48 | | 14 | | 27 | | 20 | | - |
| | Organizer Office 2 | 35 | | - | | - | | - | | - | | - | | - | | - | | - |
| | Speaker Preparation Room 2 | 30 | | - | | - | | - | | - | | - | | - | | - | | - |
| | Speaker Preparation Room 3 | 35 | | - | | - | | - | | - | | - | | - | | - | | - |
| | Auditorium | 1,097 | | 653 | | - | | - | | - | | - | | - | | - | | - |

| | | |
|-------|---------------|--------|
| Arena | End Stage | 12,610 |
| | Center Stage* | 15,000 |
| | Boxing* | 16,000 |
| | Sporting | 12,000 |

* Extension to CONVEX to reach maximum capacity

† With stage set up capacity

Without stage set up capacity

| | | |
|-------------------------------------|--------------------------------|-------|
| Pre-function Area (m ²) | Convention Pre-function Area | 2,164 |
| | Exhibition Pre-function Area | 617 |
| | Arena Pre-function Area (G/F) | 3,537 |
| | Meeting Room Pre-function Area | 3,303 |

Galaxy International Convention Center

Galaxy Macau™, COTAI, Macau
 Sales Hotline: +853 8883 1628 Fax: +853 8883 3988
 Email: sales@galaxyentertainment.com
 Website: galaxyicc.com

